



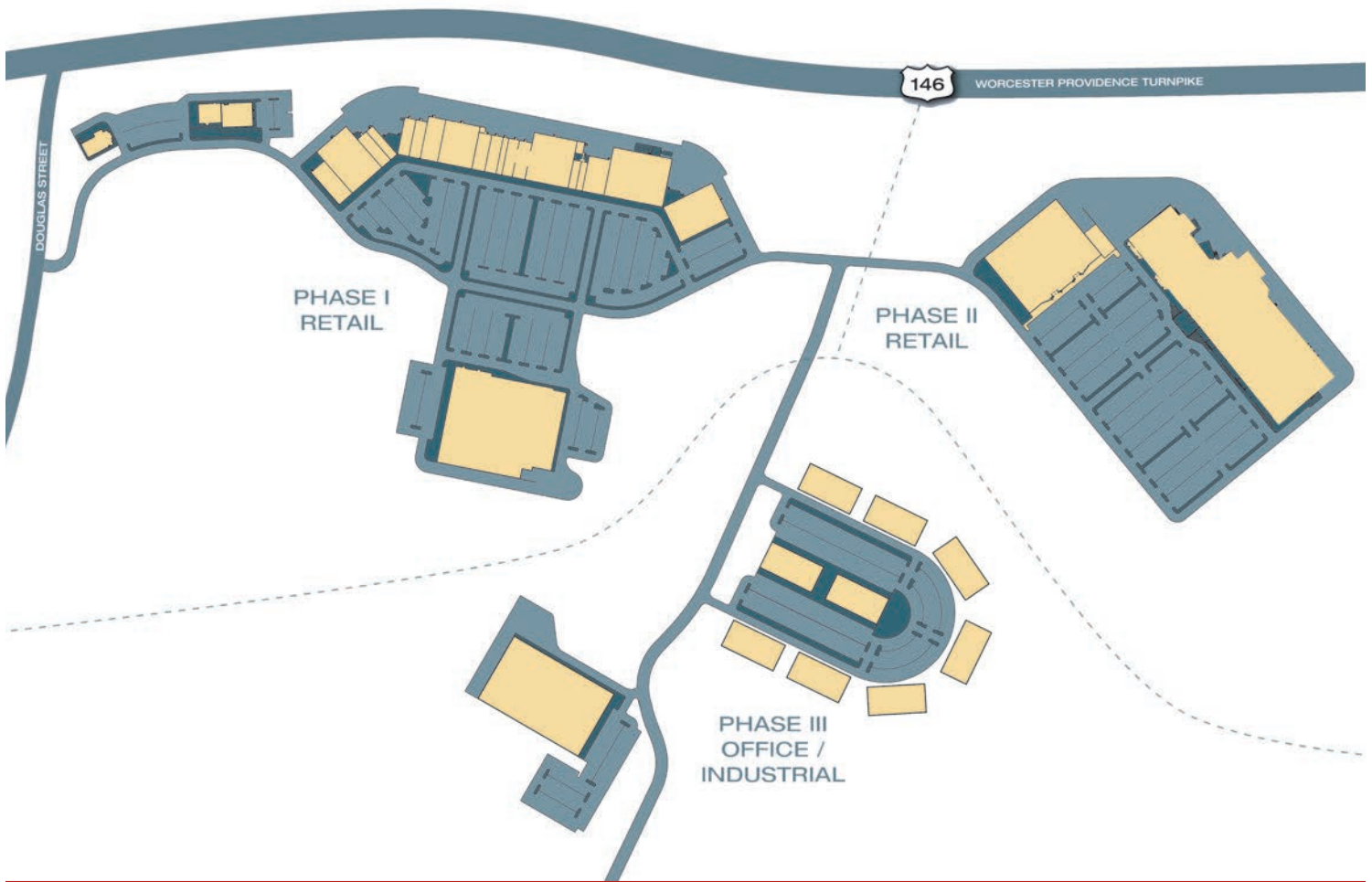
# UXBRIDGE CROSSING

Douglas Street (Route 16), Uxbridge, MA



Conveniently located just off Route 146 this project is situated in the heart of one of the fastest growing areas in the state. Our plan enables the project to grow with the community using a phased approach to development. We have maintained flexibility to grow from a traditional neighborhood shopping center to a more regional format, adding junior anchors and larger boxes as needed. The center will have tremendous visibility and access to Route 146. In addition to the retail the convenience of the site will enable us to offer office, flex and industrial space to service the growing needs in the corridor.

## PROPOSED DEVELOPMENT - UXBRIDGE CROSSING, UXBRIDGE, MA



### PROPOSED DEVELOPMENT

<b>Phase I:</b>	
Retail	360,000 sf
<b>Phase II:</b>	
Retail	240,000 sf
<b>Phase III:</b>	
Office	31,500 sf
Office/Industrial	100,000 sf
Flex Space	300,000 sf

### CONTACT

Joseph E. Harnan  
 Director of Leasing & Marketing  
 KGI Properties, LLC  
 10 Memorial Blvd., Suite 901  
 Providence, RI 02903  
 T: 401.273.8600 x329  
 E: j.harnan@kgiproperties.com  
[www.kgiproperties.com](http://www.kgiproperties.com)



# UXBRIDGE CROSSING

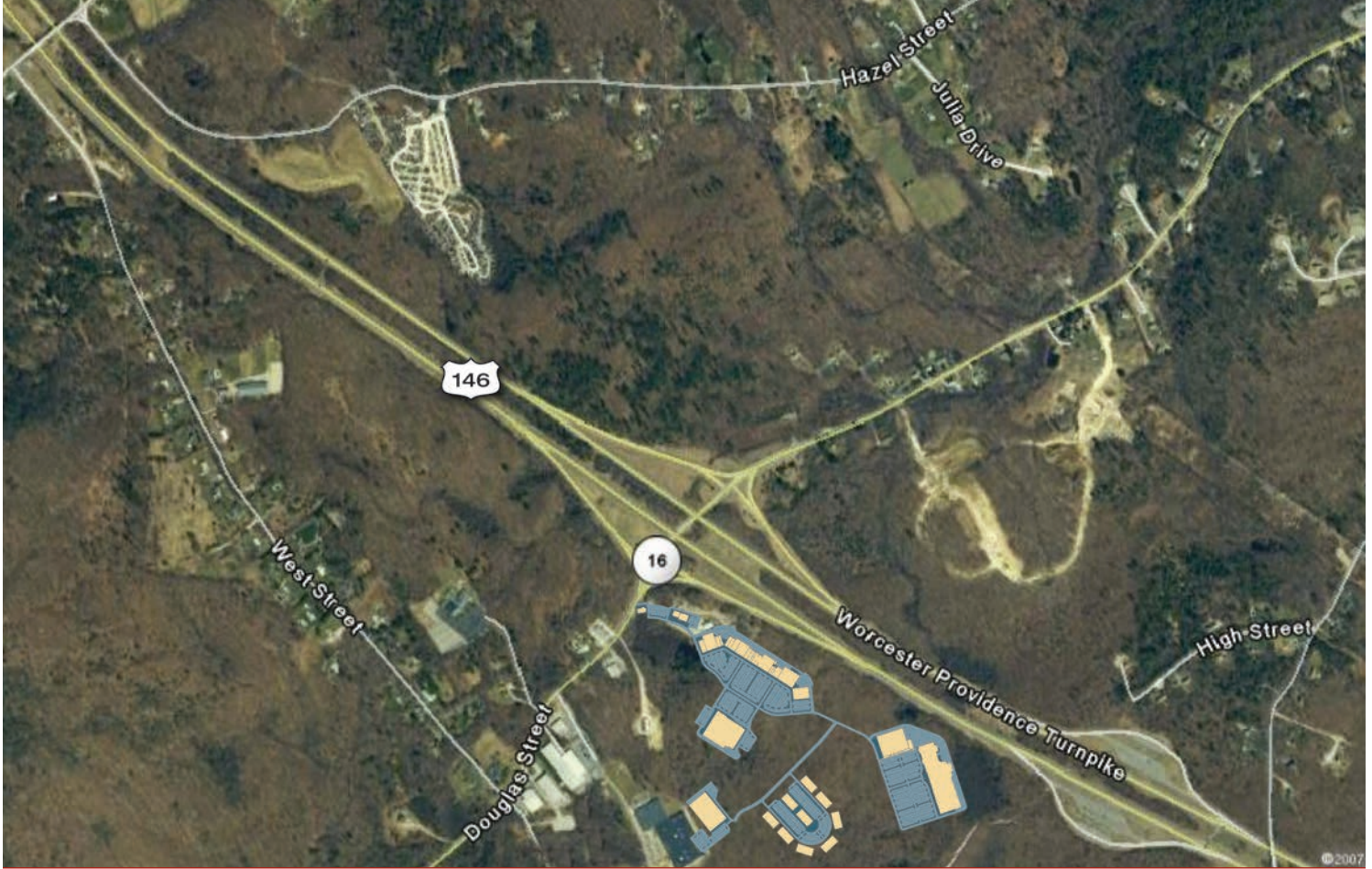
Douglas Street (Route 16), Uxbridge, MA



## UXBRIDGE CROSSING

Location:	Douglas Street (Route 16) at Worcester Providence Turnpike (Route 146), Uxbridge, MA
Proposed Retail GLA:	600,000 sf
Proposed Delivery:	Fall 2018

## AERIAL VIEW - UXBRIDGE, MA



DEMOGRAPHICS 2016	3 mile	5 mile	10 mile
Population:	16,600	36,443	197,781
Households:	6,294	13,433	75,746
Average Household Income:	\$92,004	\$93,255	\$87,739

### CONTACT

Joseph E. Harnan  
 Director of Leasing & Marketing  
 KGI Properties, LLC  
 10 Memorial Blvd., Suite 901  
 Providence, RI 02903  
 T: 401.273.8600 x329  
 E: [j.harnan@kgiproperties.com](mailto:j.harnan@kgiproperties.com)  
[www.kgiproperties.com](http://www.kgiproperties.com)

*The information contained herein is from sources deemed reliable; however no representation or warranty is made to its accuracy and is submitted subject to errors, omissions, and changes to the subject property's condition, layout, square footage and development plans without notice.*